

EUROBODALLA WOODCRAFT GUILD INC

# **“The First Seven Years....”**

Compiled by Norm Lee

PUBLISHED BY JUDY LEE FEBRUARY 2001



## WOODWORKERS CLUB TO BE FORMED

Peter Walsh, who restores antique furniture in his factory at Mogo, is planning to form a club for people who are interested in working wood.

"The only requirement for membership," said Peter, "is a love for making things from wood."

"It doesn't matter if you're still sharpening your first chisel, or you've been doing it all your life. We want hobbyists."

"We want professionals."

"We want carvers, turners, cabinetmakers, and people who get pleasure just by running their hands over fine woods."

Peter has called a meeting of all those interested at his Mogo factory at 11am Sunday week (June 28). "Everyone interested in working timber is welcome," he said.

Peter made it clear that the meeting would decide how it wanted to run the club, but as a guide he outlined his thoughts on how he felt it could operate.

"I feel," he said, "that the club should actually make things rather than just talk about how things are made."

"Each member would contribute about \$25 to get us started."

"This money would be used to buy fine timbers."

"We would then select three or four specific projects. These projects would involve carving, turning, and cabinetmaking."

"We would then sell the finished work and use the money to buy more timber or possibly special imported tools for members."

"Maybe we could donate them to charity."

"Initially we would meet on Sundays at my factory, then probably meet in other members' workshops. The members themselves will make these decisions, including a name for the club."

"In my mind, at this stage, I am calling us The Woodworkers of Mogo."



# 1987

In June 1987 the following item appeared in the local paper:

## Woodworkers Club to be formed

"Peter Walsh who restores antique furniture in his factory at Mogo, is planning to form a club for people who are interested in working wood. It doesn't matter if you're still sharpening your first chisel or you've been doing it all your life. We want hobbyist. We want professionals. We want carvers, turners, cabinetmakers and people who get pleasure just by turning their hands over fine woods."

The first formal meeting of the Eurobodalla Woodcraft Guild was held on 26<sup>th</sup> July 1987 at the home of Ivan Hollins of Mogo, with Peter Walsh in the chair and twelve potential members.

A copy of the Minutes of this first meeting is included as Attachment A. A list of members at August 1987 is included as Attachment B.

In general the objectives of the group were:

"To promote the woodworking crafts and good fellowship; to educate train, coach and encourage members; to help conserve and develop timber resources; and to maintain contact with other woodworking groups."

## THE WOODWORKERS START TO DOVETAIL

The second meeting of the newly formed woodworkers group was held last Sunday in Don Lee's workshop in Mogo, and agreed to call themselves "The Eurobodalla Woodcraft Guild".

They elected Peter Walsh as president, Bob Hillman as vice president, Gerald Horey as secretary, and David Button as treasurer.

"Enthusiasm is high", said Peter Walsh. "I believe we will develop into a vigorous, worthwhile organisation. I also believe we will have a

lot of fun. We are planning demonstrations by top professionals, wood gathering expeditions, bulk buying of things we all need, and the sharing of our expertise, tools, and workshops".

The next meeting will be held at 2 pm Sunday July 26, at the home of Ivan Hollins at Tomakin.

## ✓ STRONG SUPPORT FOR WOODWORKERS

Peter Walsh has been encouraged by the response to his plan to form a hobby group of woodworkers at his furniture factory at Mogo.

"Since I tabled the idea of starting the Woodworkers Mogo," he said, "my phone has run hot".

Clearly there are many people in this area who love working with wood.

A number of skilled craftsmen wish to join just for the fun of it, and to share their skills.

Of course, you don't need skill to join - just enthusiasm for making things out of wood".

Peter has called the foundation meeting at his factory for 11 a.m. on Sunday, June 28.

Carvers, turners, professionals, hobbyists, people who are still learning to sharpen a chisel - everyone is welcome.



Within two months the group membership had risen to twenty-five.

Year 1987 activities included:

Craftsman Toshitaka Ota from Japan demonstrated their ancient "Mitred Tenon Joint" which is still in use today.

A talk on the history and art of woodcarving by Al Haddock.

## THE 1200 YEAR OLD JOINT

**About 1200 years ago the Japanese perfected a way of joining together**

**three pieces of wood without glue or nails, and with remarkable strength.**

Although he explained his techniques in detail for the mitred tenon joint, it is unlikely that he'll face any real local competition for quite some time.

Say, for a least 12000 years.

**Picture: "Tosh" demonstrates the impossible to the Eurobodalla Woodcraft Guild.**

It is called a mitred tenon joint, and it is still used by Japanese craftsmen.

Last week in Peter Walsh's Mogo workshop, for the Eurobodalla Woodcraft Guild, Japanese master craftsman Toshimoto Ito made such a joint.

**It was a work of exquisite detail, and clicked together like a press stud.**

### TOOLS

"Tosh" (the group could not handle his full name) does not use the tools of the techniques of a western woodworker.

He planes towards himself, not away, because the Japanese work sitting down.

His chisels are heavy and laminated from chrome steel and mild steel.

He sharpens them on a natural mudstone with a grit of 6,000.

### EDGE

That's just a whisker finer than a baby's bottom, and produces a cutting edge that makes a cut-throat razor feel blunt.

His saws (which again he pulls towards him) are so fine they leave a saw cut like a knife cut.







## THE ONE-HANDED CARVER

The Woodcraft Guild had waited three months for Al Haddock, carver extraordinaire, to demonstrate his rare skills at decoy ducks and eagles.

He even has a machine to make wooden eyes.

However, two days before the great carve, Al bumped his knuckles into his bandsaw.

So apart from a few words of advice at the meeting from the master, the decoy ducks will have to wait for another day.



Demonstration of turning a vase to "see through" stage by Don Lee.

A display of antique planes from finger, to molding, to rebating by Peter Walsh with examples of their use.

Mick O'Donnell, an overseas woodturner, demonstrated to our group and other woodturners from the area, totaling about 150 people. The demonstration was made possible due to the organisation of Don Lee.

Demonstration of woodturning a ten inch Beechwood plate by Ivan Hallins.

Our first group activity was undertaken in the form of two spinning wheels where portions of plans and timber were distributed to members who worked on these at home and "assembly sessions" took place.

In November 1987 our Guild Library came into existence.

## 1988

By early 1988 our membership had grown to thirty-three and activities were as follows:

Demonstration of mortice and tenon joint by Gary Ellis with alternate methods by Helmet Kubitzky.

Display of woodcarving and equipment used by Al Haddock including his most spectacular carving success the Decoy Duck.

Demonstration of the use of an "adze", a tool used for thousands of years in boat, furniture, house and bridge building.

Demonstration by Gordon Millbourn in metal removal in tool sharpening by means of the abrasiveness of particles in both natural and artificial stones. He also demonstrated the use of ring gauge in bowl turning.

Demonstration of making a replica of the ancient Bow Saw by Wermer Pingel using scrap timber and part of a broken band saw blade.

Demonstration of a foot operated electric switch for all tools by Ron Dent.

American woodturner Dennis Stewart of international fame was enticed by Don Lee to include in his Australian tour a demonstration at Mogo, which included in particular, the use of the "Stewart Tool System" which he had invented.



# THE GREAT MORTICE AND TENON DEBATE

Gary Ellis is a master cabinetmaker from Durras. However, when he set out, at the last meeting of the Eurobodalla Woodcraft Guild, to demonstrate his special way of making a mortice and tenon joint, he had overlooked one thing - his fellow Guild members.

"Wait a minute! You're dilling out the mortice!"  
"Yes?"  
"You don't drill it out."  
"You chisel it out."  
"I drill it out."  
"Here, give me that chisel."

As Don Lee's workshop filled with the sound of argument, sawing and chiselling and mortice and tenon joints appeared everywhere like borer holes, Gary Ellis abandoned his mortice chisel and disappeared into the night.



A tree identification party from our group revisited forestry land on the Bolaro and Misty Mountain roads under the guidance of Regional Forester Graeme Grey.

The Club project in 1988 centered on the construction of two Dexter Rocking Chairs, which involved most members and finally an upholstery demonstration on one of them by Peter Walsh.



# The tall timber from forestry

Grahame Grey is our Regional Forester and a very important man in that neck of the woods.



When the Eurobodalla Woodcraft Guild asked if they could have a guided tour of one of



• Above: Regional Forester, Grahame Grey, holds gumnuts at the Eurobodalla Woodcraft Guild in the palm of his hand.

the Forestry preserves, Grahame generously decided to do it himself.

It was just as well he did, because in the Guild there are some pretty knowledgeable tree guys, who certainly know the difference between an accacia and a hole in the ground.

## INNOCENT

The tour through the North Durras floral reserve, started innocently enough with everyone using understandable names such as "spotted gum" and "stringy bark".

Then as it settled down to a contest between Grahame and the Guild's top four and they changed gear to botanical names they left the English language behind.

The battle raged through the sheoaks, over the creek, past rain forest, cabbage palms and sassafras, across native cherry, gee bungs and burrawangs, up into the foothills of the foothills.

The crowd of lesser Guild members followed, braving leeches and vines to stay with the action.

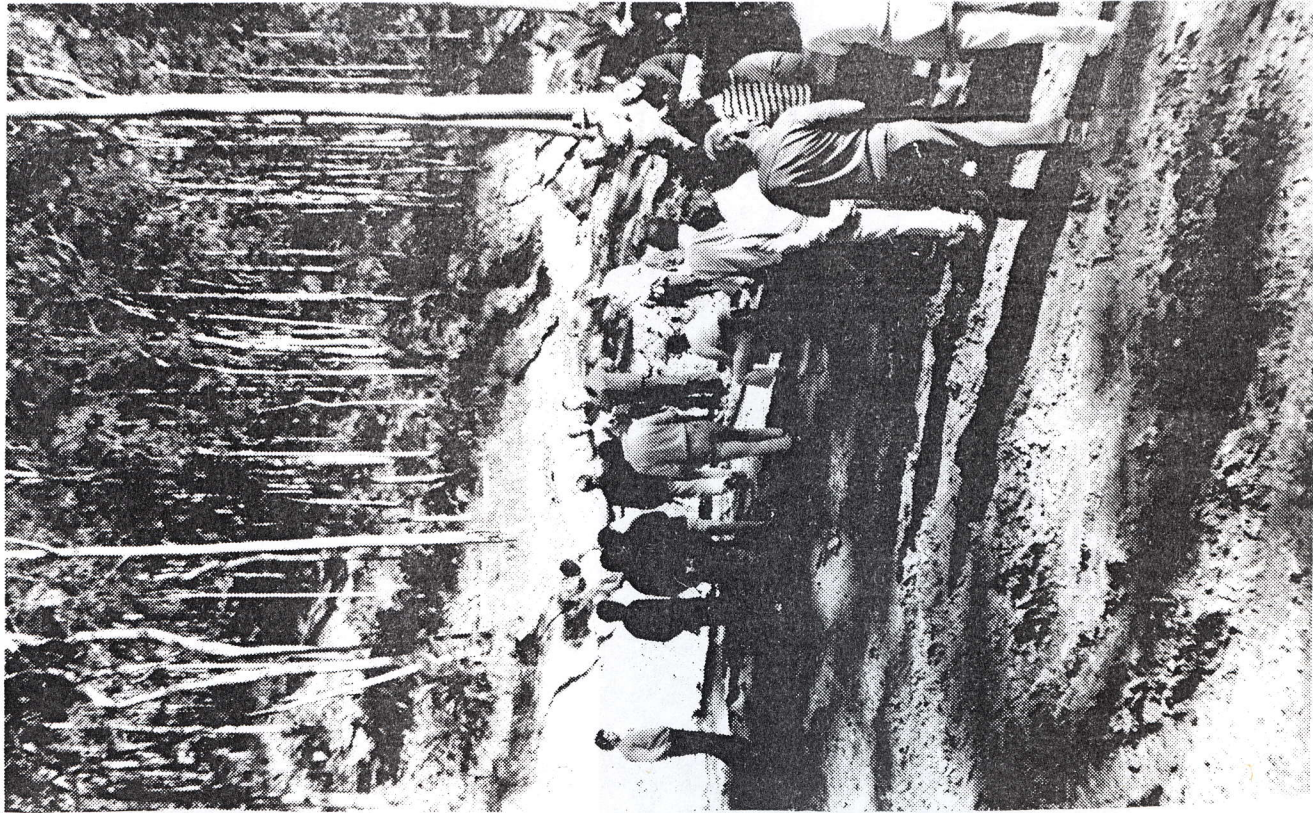
The final count was **conclusive**. Grahame:4. The Guild:0.

Grahame was kind enough to say he would happily do it again.

The Guild asked for time to read a few more books.



# FORESTRY SHOWS ITS WARES



The Forestry Commission works in the eye of a storm, surrounded by a whirling wind of conservationists, politicians, endangered workers, the demands of industry, and many other people having their say.

In the midst of it all they have to market their product - wood.

Last Sunday Graeme Grey, Forestry's head man in this region, with Forester Stephen Murphy, took the Eurobodalla Woodcraft Guild on a guided tour of Forestry land on the Bolaro and Misty Mountain Roads.

The trip was partly to identify trees indigenous to the area, but it was also an opportunity to show how the Forestry Commission controls logging operations to keep logging commercially viable, and the forests permanently self generating.

## DID

Show the Guild they certainly did.

Standing in the middle of a stand of spotted gum that had been logged so recently that the bark was still on the ground the men from Forestry demonstrated the care and attention to detail that goes into every logging operation. Every foot of land is mapped.

Every tree species is identified, its age and condition noted.

Its logging history is checked for the last fifty to a hundred years.

In areas chosen for logging, individual trees are selected and marked.

At least four old hollow trees a hectare are left to provide habitats for native animals.

Special corridors are left so that native animals can move easily to other parts of the forest.

No logging is conducted close to water courses.

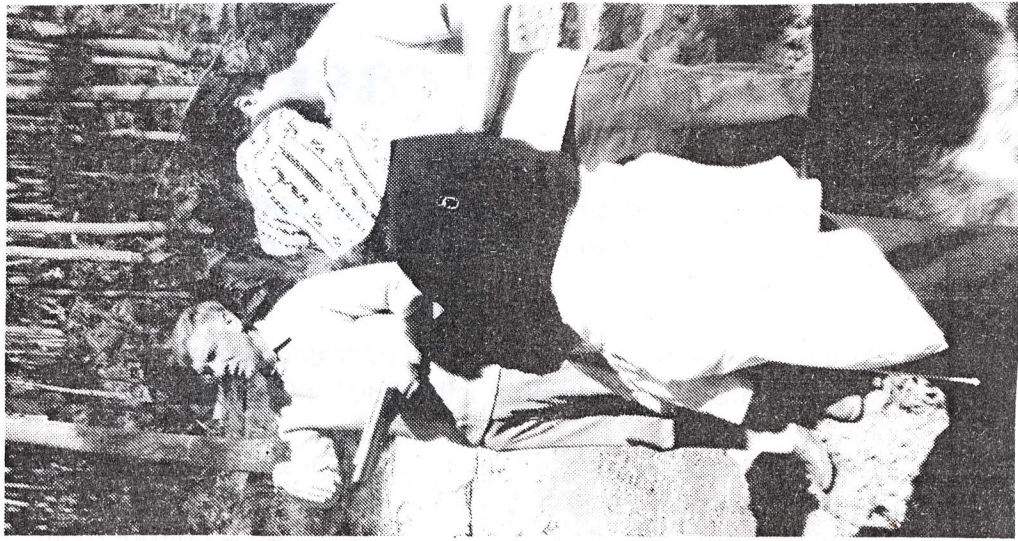
When they have finished the contractors must make good the area to avoid erosion or unsightliness.

Finally, the Forestry inspectors check that all work has been carried out to the specifications.

## NO PETS

"Maybe they don't have a pet name for each tree" said Guild member Bob Hillman "but Forestry would sure know if you took one during the night."

Foresters Graeme Grey and Stephen Murphy look after their trees the way other people care for their horses.





## 1989

Following a peak membership of thirty-seven members the previous year, 1989 commenced the year with twenty-nine members and an interesting program lay ahead.

Bert Wraith an avid reader of the Australian Woodworker made a wood chuck from wood using plans in the Sept/Oct 1988 edition and demonstrated its use.

Five of the world's best woodturners in the form of one man, Richard Raffan, became associated with our group in 1989 and on Don Lee's huge lathe gave a demonstration of micro turning – he turned a small piece of radiata pine into a delicate shape a few millimeters in diameter and then decorated it to look as though it had been carved from ivory.

## THE MASTER SHOWS THE CLASS

**Of the top ten woodturners in the world Richard Raffan is generally considered to be five of them.**

The members of the Eurobodalla Woodcraft Guild have read his books, seen his deft touch on videotapes, handled his work in various galleries, but few had seen him in the flesh, actually working on a lathe.

### BACK

Well, at last Satur-

day's meeting they saw him at work, and almost to a man they are back to the drawing board.

Richard Raffan has not only moved to Malua Bay, he has joined the Guild, and having paid his ten dollars annual subscription, he reached for his skew chisel and demonstrated his consummate skill.

### THROUGH

He turned a piece of scrap radiata pine as fine as an ivory knitting needle, and a banksia wood bowl so thin the light shone through it.

He made it all look as difficult as potato peeling.

President Peter Walsh ruled that Richard had passed the Guild's initiation test.

• **Pictured: Richard Raffan at the lathe — he is to woodturning what Greg Norman is to golf.**





Don Lee used his forge to manufacture a "ring gauge" from an old car suspension spring to the amazement of members. "This man's abilities has no limits" a member was heard to say.

Bill Turley made a "steady" for long lathe work and a tailstock, using ballbearing races for perfect centering and demonstrated its use to members.

Which glue to use? Ron Dent made up about a dozen joints using the various glues used by woodworkers. By using intricate weights and measures he demonstrated the breaking points of each one.

Club projects for the year involved making two more Dexter Rockers for which sales were assured and the construction of a beautiful Jacobean side table from American White Oak.

Members were thrilled when at the Melbourne Working with Wood show in late 1989, their patron Don Lee was equal first place in spindle turning with his beautiful and unique Walking Stick.

# The day the joints broke

**It was a fraught Christmas barbecue for the Eurobodalla Woodcraft Guild. Member Ron Dent was under considerable pressure.**

At the previous Guild Meeting he had conducted an experiment to compare the strengths of various wood glues.

He had done this by making six identical mitre joints, and used on each joint a different

glue.

The joints were then tested to breaking point.

As Ron was busy breaking joints, Patron Don Lee examined one of the already broken joints, and declared the test invalid because the

joints weren't good enough.

**He rejected Ron Dent's joints!**

This is the woodworkers equivalent of accusing a man of throwing at cricket.

## KEPT

So at the Christmas barbecue, held at the Mogo home of President Peter Walsh, steak

and beer were kept in the eskys until this matter was resolved.

The first joint was clamped to a joist of Peter's verandah, an empty kerosene tin was hung from the end of it, and Ron Dent started to add weights into the tin.

As the weights mounted, so did the tension.

There was a dew of perspiration on Ron's forehead as he called the weights.

the authenticity of metric measurements) then at 52 pounds the joint broke.

There was an uneasy silence as Don Lee came forward to inspect the wreckage.

The great mans face was impassive as he probed the splinters.

Finay he declared that the glue had held.

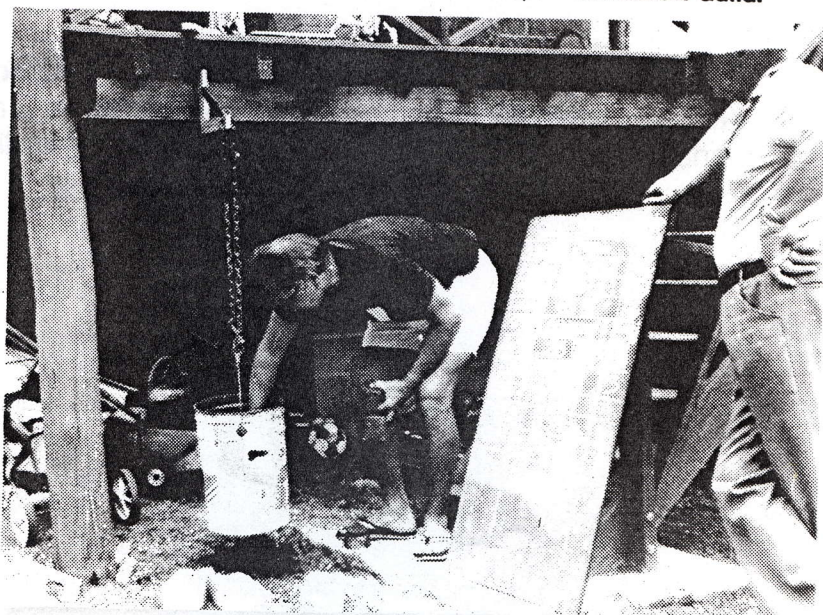
The wood it was that broke.

It was then the Guild moved to the eskys.

## NO METRICS

36 pounds...42 pounds...48 pounds (the Guild does not accept

**• Ron Dent tests a joint to destruction at the Christmas barbecue of the Eurobodalla Woodcraft Guild.**





# 1990

Year 1990 started well with membership around thirty.

Early in the year saw a visit to the area of members of the Sydney Woodturners Guild who, after inspecting forest areas, joined with some of our members at a barbecue at Don Lee's home.

In April 1990 our group visited the Deep Creek Dam area where, under guidance from Doctor Wallace, we inspected an area set aside for a Botanic Gardens where only species common to the area would be propagated.

A later visit to Kiola State Forest involved our group looking for the southern most Australian Cedar and collection of seeds or seedlings for planting in the Native Botanic Gardens at Deep Creek.

Michael Rutter an expert in marquetry, who was involved in specialty work of this nature in the parliament house, gave us an interesting talk and demonstration of the art.

Doctor Jeff Lee talked to us on the problems of dust and toxicity of woods. He explained how to gain some protection with breathing apparatus, dust collectors etc.

Don Lee, in a bowl turning demonstration from a green piece of Jacaranda, produced a bowl so fine that light would shine through it.

Projects for the year saw the completion of the Jacobean table delayed from the previous year.

Under guidance from Helmet Kubitzky the construction of the groups own workbench was commenced.

With inspiration from Henry Holmes the group produced a variety of toys which were donated to handicapped children and Pivot Point for distribution to underprivileged children.

Another honour for our patron Don Lee, who during the year, was invited by the Forestry Commission to turn a bowl from Australian Cedar for the Henry Kendall Collection to be held in the library of the Forestry Commission in Sydney, along with other prestige works.



# Trees — in two hundred years

## IN TIME

They will then plant these seedlings in the Native Botanic Garden at Deep Creek Dam, and care for them until they are established.

In the fullness of time and that could be well over two hundred years, the trees that Guild plants will be harvested to be used by craftsmen of future centuries.

★★★★★

## CONTROL

The collection of seeds and seedlings will be strictly controlled by the Friends of the Native Botanic Garden to ensure that no tree is introduced into the Garden that is not native to this region.

The Friends will also dictate the precise position in the Garden for the Guild to plant their trees.

★★★★★

## FEES

As friend Murray Wallace says: "Even in two hundred years I don't want a superb cedar cut down in the middle of one of our planned vistas."

"In the Year 2300" said Guild vice-president Bob Hillman "I want to make sure that craftspeople will know how it feels to turn Australian cedar."

Australia is in danger of running out of the trees that have been used to make furniture since the colony was founded.

Trees like cedar, coachwood, sassafras and myrtle are now so rare that they are protected by law.

To protect this sadly reduced heritage the Eurobodalla Woodcraft Guild has come to an understanding with the Friends of the Native Botanic Garden so that in about two hundred years craftsmen in this area will have timber to work with.

Under this plan the Guild will go up into the rain forest remnants of our mountains and collect seeds and seedlings of species of trees that are under threat of extinction.

# LOCAL MAN TO TURN BOWL FOR FORESTRY COMMISSION

**Mogo woodturner Don Lee has been given one of the most prestigious commissions among Australian craftspeople.**

He has been invited to turn a bowl from Australian cedar for the Henry Kendall Collection held in the library of the Forestry Commission in Sydney.

The collection was started in 1982 to honour Henry Kendall, who apart from being one of Australia's most famous poets, was our first inspectors of forests.

He died at the early age of 42.

## ONE A YEAR

Each year the Commission buy one major work for the collection, and this year it has chosen Don Lee to make a very special bowl.

The Commission supplied the cedar, which came from the home at Yatteyatan, just north of Milton, where Henry Kendall was born.

## SOME WORRIES

However, there are worries.

Don has just picked up the log of old cedar, but believes that the log may have fractured internally when it was felled from the tree.

If this is so it will severely restrict the size of the finished bowl.

The commission may get a bowl smaller than they had asked for, but they will still get a rare work of art.

Picture:

• Don Lee, with fellow members of the Eurobodalla Woodcraft Guild, examines the cedar log from the birthplace of Henry Kendall.





# Searching for the last of the great cedars

The famous Australian red cedar was once prolific in the forests of the coast.

When, however, its value as a furniture timber was realised in a very short space of time it was logged out.

Today cedar is virtually non-existent in our forests.

However, the organisers of the Native Botanic Garden at Deep Creek Dam, don't give up easily.

They are determined to find seedlings for the garden, so that future generations may see one of the truly great trees of this country.

## LIMIT

The southernmost limit of the cedar was North Durras, and the Friends of the Native Botanic Garden are determined to find remaining trees in the Kiola State Forest.

Last week they combined with the Eurobodalla Woodcraft Guild to start their search.

"It was not like picking daisies," said Guild President Bob Hillman. "This is rough country.

"We, slippery, thickly wooded.

"If there are any Tasmanian Tigers left, this is where they would be.

"Maybe woolly mammoth."

## PROBLEMS

There are problems in collecting small seedlings.

Before a seedling is removed for transplanting to the propagation area at the Botanic Garden, its precise location must be noted, its height measured, and other relevant detail noted.

Even then the seedling will need about another six months of growth before it can be accurately classified.



"We partly guess at our first classification" said Murray Wallace, who was leading the field expedition.

"Precise classification is slow and laborious.

"We know we found no cedars, but we are confident we have coachwood and lilli pilli, and perhaps sassafras.

"We had hoped also for native tamarind, but there wasn't any that we could see."

The Friends of the Native Botanic Garden and the members of the Eurobodalla Woodcraft Guild will return to the Kiola State Forest.

They are confident that somewhere in that almost impenetrable forest is the last of the great red cedars.

**Picture:** Pat Spiers, Murray Wallace, Helen and David Rees of the Friends of the Native Botanic Garden, with Ron Hanlon of the Eurobodalla Woodcraft Guild, sort through seedlings collected in the Kiola State Forest.

## EDITORS NOTE

### Editors Note:

This expedition to collect seedlings for the Native Botanic Garden was done under special permission from the Forestry Commission.

Normally living flora cannot be removed from State Forests.



# 1991

In 1991 with a membership of thirty-two, activities for the year centered on a variety of club projects.

Construction of three mobile stools with upholstered seats from timber donated by Don Lee. These were donated for use by handicapped children at Moruya Primary School.

Design and construction of seven wine tables for sale to boost guild funds.

Remnants of American Oak from previous projects were used by Henry Holmes and Norm Bullock to produce a small table.

Toys in some quantity were again produced by members for donation to Pivot Point, at the end of the year.

Through the generosity of our patron Don Lee, a commission he obtained to design and construct a large kitchen table in Australian Red Cedar was passed on to the group. This was our largest project so far with timber alone costing a thousand dollars. The finished project was displayed to members and friends before handing over to the proud owner.

## WOODCRAFT GUILD

**The Eurobodalla Woodcraft Guild has taken a step forward in its aim of furthering the wood-working knowledge and skills of its members by having the next meeting at the premises of Moruya Kitchen Craft.**

Hosted by Ray Chalk, members will be taken through the intricacies of the latest equipment and methods used to produce the ultra modern kitchen of today.

At the Guild's January meeting, held at the patron's workshop in Mogo, the next six months of the year was planned.

The completion of four mobile stools to be donated to the handicapped section of Moruya Primary School took precedence, with six Edwardian style

round corner tables, a couple of narrow hall tables and a European style workbench to follow.

The workbench will be the same as the one built by the members for Guild work and housed at Don Lee's workshop at Mogo.

Last year's projects, which included a Jacobean style table, three dexter rocking chairs and a multitude of toys, proved adequate to keep the Guild reasonably busy.

Sale of the table and rockers helped to keep the Guild financially viable while Pivot Point assistance Santa Claus to distribute the toys to underprivileged kids.

**The March meeting of the Guild will commence at 2pm Saturday March 2.**

**New members or those wishing to join the Guild should ring the secretary on 73 8793.**



## 1992

Membership dropped slightly in 1992 to around the twenty-five mark but once again a variety of activities made up to a full and interesting year for the guild.

Early in the year the Canadian Woodturner of fame Michael Hasoluc was enticed by our patron Don Lee to undertake group demonstrations at Mogo and members witnessed an interesting slide show followed by demonstration of fine turning and a modern and unusual approach to decorative art.

A different project in the form of restoring an antique hall table for Nev Bickford, was undertaken to the great satisfaction of its owner.

P&N Tools representative Bob Davies visited our guild and demonstrated his style of basic woodturning.

Herb Halwert from Cobargo demonstrated from scratch the construction of a Longworth Chuck and then demonstrated its use.

Graham Schirmer a local friend of our group and expert in knife making demonstrated his ability by working from basic wire cable, heating, welding, forging, shaping, tempering, sharpening and polishing to produce a top blade.

Show and tell was introduced on the basis of bringing to meetings items you have produced at home and proud to show or the results of unsuccessful projects for which you need help or advise.

## Working wood proves an evergreen craft

At the fifth annual meeting of the Eurobodalla Woodcraft Guild, the outgoing President David Swinton reported on another successful year.

With membership around the 30 mark, the skills of its members range from top woodturners through the skills of cabinet-makers, carpenters and a lot of very interested hobby woodworkers and restorers.

The project highlight of the year was the construction by members of a large cedar kitchen table, which was valued at well over two thousand dollars. Several mahogany wine tables were also made, as well as a variety of toys which were donated to a local charity.

An innovation at meetings this year, was "show and tell" sessions where members brought home projects along to either show off their skill or tell how the project was causing them troubles, in the hope the collective knowledge of the group could solve their problems.

A field day to identify timber types in the bush and to witness a chainsawing demonstration was also popular with members.

Several special demonstrations were arranged for members including - bowl and spindle turning; the correct way to sharpen tools; knife forging from bare metal; construction of an inexpensive but useful bowl turning chuck; the repairing of old clock workings and rejuvenation of antique wood finishes.

A special vote of thanks went to patron Don Lee for not only his encouragement and generosity since the groups inception, but for the continued use of his workshop as a meeting place.

By popular vote, Barry Corrigan was elected president for the ensuing year and will be assisted by an active committee comprising Les Wilkins, Doug Cullen, Norm Bullock, David Swinton, Mick Forsyth and Norm Lee.



Don Lee gave a demonstration in wood turning to the local Arts and Crafts Guild to which our members also attended. Don also gave a tool sharpening demonstration.

Silvio Apponyi from Adelaide who is a top sculpturer gave a talk to our group on this subject and presented photos of his work.

Mark Watt, Forestry Officer and member of our group, guided members on a tour of local forestry areas north of Batemans Bay pin pointing some of the tallest and most ancient spotted gums in the area.

Later, David Hancock demonstrated the correct way to fell an old Blackbutt and then chainsaw the large burls from its bulk.

The guilds main project for the year related to preparing Blackbutt burls for several table tops which involved setting up of special router platforms for routing the material to a level surface and designing suitable legs on which special discussion sessions were held.

One heavy section of burl was also rough turned to produce a future table lamp base.

Members again produced a variety of toys which president Barry Corrigan and Henry Holmes presented to Pivot Point.

Members, wives and friends enjoyed an end of season dinner at the Batemans Bay Bowling Club.

## **1993**

With membership numbering in the twenties in early 1993 and entering its seventh year of operation the guild committee had to work hard to provide an interesting program of activities which had not previously been presented to members.

Members visited Jerry Olah's pine design factory at Batemans Bay where a local manufacturer designs a variety of household furniture and produces it in a well designed and fitted out workshop.

With a change of emphasis on woodturning patron Don Lee gave a talk on "turning between centers" and demonstrated various tool applications to spindle turning.



In May 1993 our group revisited Eurobodalla Botanic Gardens at Deep Creek to check for progress of trees that had been planted some two to three years earlier. Our group reviewed progress made by caretaker John Knight and his helpers, in gradually turning the area into a valuable public recreational area.

Mid year saw the completion of several burl tables, which the group had worked on for many months and the final finish with a new product Enviroteck brought satisfaction to members.







TOSHITAKA OTA USING JAPANESE TRADITIONAL TOOLS  
- BOB MILLMAN LOOKING ON (1987)



TOSHITAKA OTA AND HIS WIFE WITH PRESIDENT  
PETER WALSH (1987)





DEXTER ROCKER -  
GLUED AND ALL TIED  
UP FOR DRYING (1988)



GROUP MEMBERS WORKING ON DEXTER ROCKER (1988)



COMPLETED DEXTER  
ROCKER (1988/89)



DON LEE SPRAYING PROTECTIVE FINISH ON DEXTER  
ROCKER WITH PRESIDENT DAVID SWINTON WATCHING





RICHARD RAFFAN GAVE A GROUP DEMONSTRATION AT HIS  
WORKSHOP - MALVA BAY (1989)



MICK O'DONNELL  
FROM LANCASHIRE  
GAVE A WOODTURNING  
DEMONSTRATION TO  
THE GROUP (1987)



WORK BENCH MADE  
BY CLUB MEMBERS  
(1991)



DENNIS STEWART FROM AMERICA GAVE A  
WOODTURNING DEMONSTRATION TO OUR GROUP (1988)





VARIOUS TOYS MADE FOR CHARITY (1990)



FIRST GROUP STALL AT SUNSHINE BAY CRAFT  
MARKET (1988)





NORM LEE AND OTHER GROUP MEMBERS WORKING  
ON RED CEDAR TABLE PROJECT (1991)



DON LEE

SHOWING SANDING TECHNIQUES  
TO OTHER MEMBERS OF THE GROUP (1991)





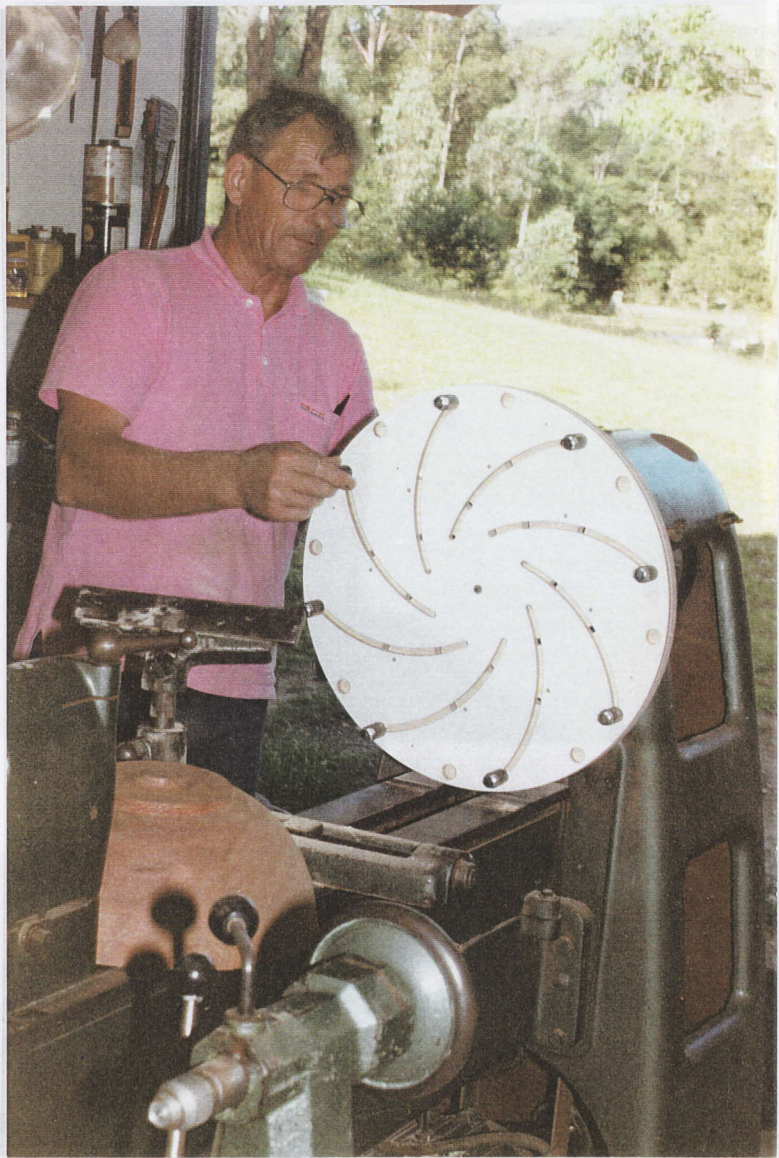
COMPLETED JACOBESAN  
SIDE TABLE MADE  
FROM AMERICAN  
WHITE OAK (1989/90)



COMPLETED KITCHEN TABLE MADE FROM  
AUSTRALIAN RED CEDAR (1991)



DEMONSTRATION BY  
HERB HALWERT  
FROM COBARGO -  
MAKING A LONGWORTH  
CHUCK (1992)

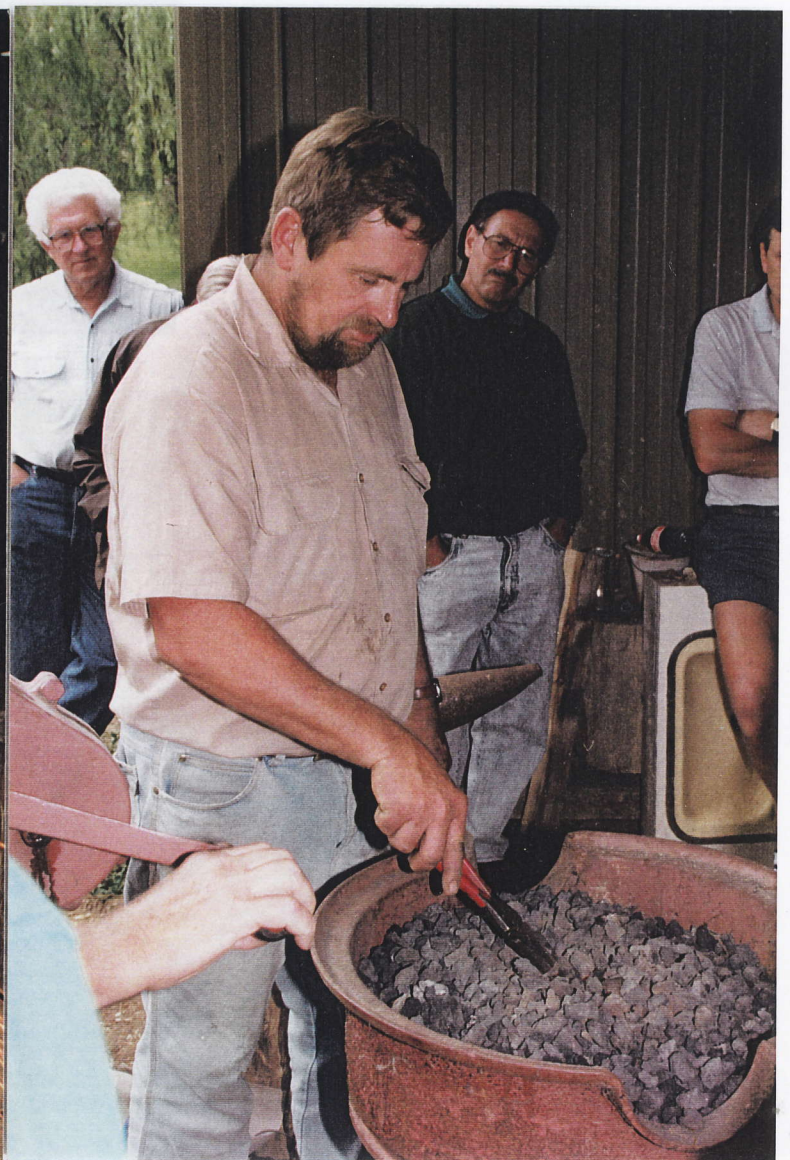


LONGWORTH CHUCK DEMONSTRATION





THE COMPLETED KNIFE



GRAHAM SCHIRMER MAKING A KNIFE FROM BASIC MATERIAL  
(1992)



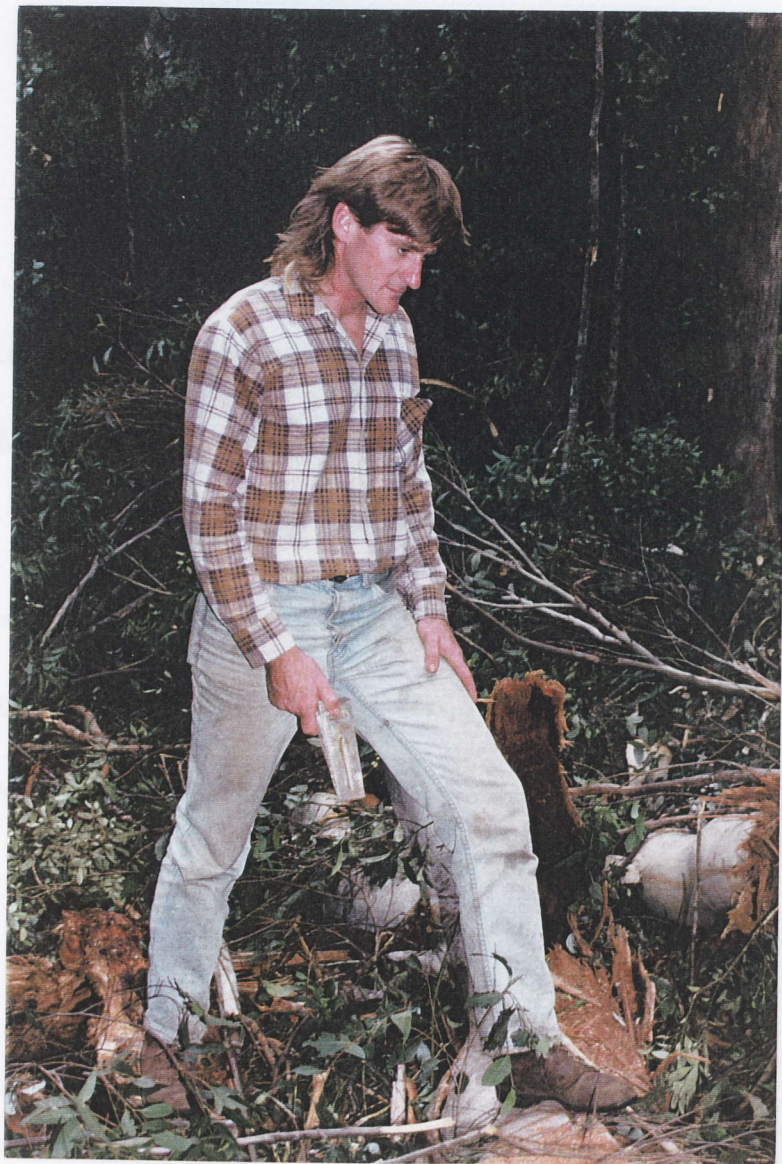


DEMONSTRATION OF  
WOODTURNING BY  
CANADIAN WOODTURNER  
MICHAEL HASOLUK  
(1992)



MICHAEL HASOLUK DEMONSTRATION





MARK WATT OF THE  
FORRESTRY LOCAL  
OFFICE LEADING OUR  
GROUP FORRESTRY WALK  
(1992)



GROUP MEMBERS ON SITE TO ASSIST IN RETRIVING  
BURL FROM A BLACKBUTT TREE FELLED BY  
FORRESTRY OFFICERS (1992)



DEMONSTRATION BY  
FORRESTRY OFFICERS  
OF FELLING AN OLD  
BLACKBUTT TREE AND  
CUTTING A BURL FROM  
ITS BASE (1992)



BLACKBUTT BURL TABLE MADE BY THE  
GROUP (1992/93)



THE EUROBODALLA WOODCRAFT GUILD.

Minutes of the meeting held at 2 p.m. on Sunday, 26th. July 1987, at the home of Ivan Hollins.

Present.

Peter Walsh (in the Chair): Bob Hillman: Ivan Hollins: Bill Turley: Al Haddock:  
Don Lee: Gordon Milburn: Werner Pingel: Steve Williams: Neville Bickford:  
Imre Szedlack: Gerald Horey: Norm Lee.

Next Meeting.

At 2 p.m. on Saturday, 8th. August 1987, at Don Lee's workshop, Mogo. Future meetings will be at the same time on the first Saturday of each month at Mogo with the venue to be advised.

Subscription.

It was decided that a subscription of \$10 per year will be levied for the present.

Project Work.

After some discussion it was agreed that the Guild undertake the initial project of making two spinning wheels with the work being divided up between all those wishing to participate.

A sub-committee of Bill Turley and Gerald Horey was convened to provide drawings and order timber. Preference was decided for Myrtle, New Guinea Rosewood and Queensland maple in that order. It is hoped that a start can be made after the next meeting.

Meeting Format.

The following format will be adhered to as far as possible at all meetings:

- (i) Discussion of Business 2 p.m. - 2.30
- (ii) Demonstration or Talk or both 2.30 - 4 p.m.
- (iii) Discussion of Project progress 4 - end of meeting.

Logo.

Adesire was expressed that the Guild should have a Logo. Members are asked to think about the design of a suitable one.

Objectives.

It was suggested that we adopt the following objectives (by courtesy of the Woodcraft Guild Tasmania):-



- To promote the woodworking crafts within the shire of Eurobodalla.
- To promote good fellowship amongst those interested in woodworking.
- To educate, train, coach and encourage members of the Guild through self-help and endeavour.
- To conserve and develop the resource base.
- To make and remain in contact with similar groups throughout Australia.
- To do all such things and acts conducive to the furtherance of the objectives and interests of the Guild.

Members are asked to consider the above for discussion and finalisation at the August meeting.

#### Newsletter.

A newsletter will be organised but until it goes into production, minutes of each meeting will be circulated to all members and double up as a newsletter.

#### The Australian Woodworker.

It was agreed that a letter be written to the Editor of the Australian Woodworker, asking him to include the name of this Guild in the next printed list of Australian Woodworking Clubs.

#### Demonstration at August Meeting.

Don Lee has offered to demonstrate the turning of a See-Through Vase. He asks that each member witnessing his demonstration pays a \$5 fee with the proceeds going to swell the Guild's bank-balance.

This demonstration promises to be really worthwhile and seems to me to be cheap at the price.

-- o -- o -- o -- o -- o -- o --

#### July Meeting Talk.

Al Haddock gave a most informative talk on the art of woodcarving and showed many examples of his work. Al has recently returned to this country after some years in the U.S. Six years ago he joined a woodcarving club there and thus started on what has now become an absorbing art form for him. His enthusiasm for this work was boundless and the variety indeed surprised many of us. His first exhibit with which I fell in love was a six inch long paper knife carved from a piece of scrap Huon pine. The handle was in the form of the head of an eagle with beak open and tongue stretched forward; it had an almost heraldic look. Al told us that he had spent the morning on the beach, carving it with only a whittling knife which he had made from one half of a pair of scissors. Much of his work had great beauty and will be an inspiration for those



interested in carving.

Demonstration at July Meeting.

Ivan Hollins rounded off the meeting by taking us into his workshop when he turned a blackwood blank into a delicate ten inch plate. As a non-turner I was amazed at the short time this took him. The only thing that worried Ivan in any way was the tendency of blackwood to 'pick' as the tool cut along the grain during the final stages of the turning. Yet the final product showed nothing of this.

Finally Ivan gave a demonstration of the use of the skew chisel in spindle turning. For someone like me who uses the lathe solely for making tool handles or for the very occasional turning of a chair leg it was a revelation. I felt I too have missed out by not concentrating on wood turning. But then who can do everything? I should instead praise the gracious heaven that there is room for all of us to do our own small thing without in any way crowding anyone else out.



EUROBODALLA WOODCRAFT GUILD

ATTACHMENT B

List of Members at 10th. August, 1987.

Bob Hillman	Vice-President	650 George Bass Drive, McKenzies Beach	711 082
Ivan Hollins		Mogo	717 583
Gary Ellis		25 Durras Road, Benandarah	786 161
Gerald Horey	Secretary	Bingi, via Moruya	738 363
Bill Turley		5 Haslington Street, Moruya	743 457
David Button	Treasurer	5 Hawdon Street, Moruya	743 193
Bert Wraith		46 Carlton Road, Batehaven	725 501
Al Haddock		2 Barbara Crescent, Batehaven	725 948
Don Lee		Short Street, Mogo	717 349
Gordon Milburn		13 Percy Davis Drive, Moruya	743 484
Werner Pingel		79 Sunpatch Parade, Tomakin	717 411
Steve Williams		5 Parkes Parade, Tomakin	717 931
Imre Szedlack		178 Silver Street, Malua Bay	711 120
Neville Bickford		85 Dalmeny Drive, Kianga	762 519
Norm Lee		28 Ridge Street, Batemans Bay	726 832
Peter Walsh	President	Mogo	717 663
Peter Lyttle		5 Albert Street, Broulee	717 995
Mick Forsyth		21 Kuwarra Avenue, Malua Bay	
Norman Bullock		9 Joseph Street, Batehaven	724 379
Ron Dent		3 Iluka Avenue, Malua Bay	711 061
Bruce Murray		33 Barbara Crescent, Batehaven	724 938
Ken Dumont		362 Beach Road, Batehaven	724 845
Alan Brack		11 Gull Close, Batemans Bay	726 801
Bea Bayes		11 Gull Close, Batemans Bay	726 801
Doug Woosnam		Kylie Crescent, Batemans Bay	726 811