

Eurobodalla Woodcraft Guild Inc

MEMBERS NEWSLETTER

September 2018

President Report

I would like on behalf of all the 'Woodies' to thank Peter for his time as President and his drive and energy to progress our Guild. These are very large shoes to fill and I will do my best to further our Guild and look forward to producing a lot of dust and shavings over the next year without a lot of hot air. Other thanks go to all the outgoing and incoming committee members for their advice and guidance over the years. In my opinion, the club is in good shape with an increasing membership and some excellent work being produced by members.

Currently our long term tenancy at the goldfields is under a cloud and we are investigating other possibilities in the area. If anybody has a spare piece of land around Mogo with a shed on it please do not hesitate to come forward.

We installed the defibrillator, generously granted from Club Catalina, outside our entrance door in the shed. The location was chosen to grant access to the unit to our fellow 'Stationary 'Engine' friends across the shed and the 'Gold Rush Colony'. Furthermore the shed is locked after hours. Following the installation Sue Page gave us an intro in the use of the defibrillator. As usual Sue's presentation was professional and informative and we are very lucky to have her in our club - thank you Sue.

We have celebrated and will celebrate in the next few weeks three remarkable birthdays of active members : Len Newman, Don Geeves and Leslie Low who have achieved the combined age of 270 years where each takes a third. Congratulations to you all and hope you will be with us for a while to come, to enrich us with your knowledge and skills.

The workshop is a hive of activity with toy boxes made under Peter M's watchful eye and John continues with his group of wood turners.

Peter B exchanged all the tungsten carbide tips in the thicknesser for us to blunt them again - what would we do without you, thanks Peter.

Disclaimer: All complaints and ridicule will be blissfully ignored and filed in the bin.

Helmut

Dates for Your Diary

Workshop Days Each Mon & Wed	Mogo
Workshop Toy Days 1st & 3rd Wed	Mogo
Workshop Demonstrations 2nd & 4th Wed	Mogo
EWG Monthly Meeting .. 6th October	Mogo

Proposed Sales Days 2018:

November 2018 - Hospital Hand Made Markets
24th November, 2018 - Sales Day Village Centre

*NOTE: Members seeking further information
contact **Secretary Eric Simes (02) 4471 5086***

The Annual General Meeting of Eurobodalla Woodcraft Guild Inc. was held on Saturday, 1st September, 2018 at the Workshop within the Gold Rush Colony. The results of the election of the 2018/19 office bearers is as follows -

President : Helmut Delrieux

Vice President : Michael Barkely

Secretary : Eric Simes

Treasurer : Linda Walker

Committee:

Assistant Secretary & Minutes Secretary : David Keating

Assistant Treasurer : Peter Brotherton

Public Officer : Malcolm McDonald

Ann Salmon

Peter McDowell

Additional essential tasks :

Grants Officer : Mark Barraclough

Newsletter Editor : Chris Birks

Timber storage : Paul Freestone

Catering : John Lodding

Asset management : Peter McDowell

OH&S and library : JJ McGrath

Toy Coordinator : Sharyn Morrison

First aid and website : Susanne Page



SHOW & TELL

Len Newmann has turned many of these intricate sewing needle cases for his wife, Audrey's patchwork group. I imagine they are a valued possession within the group, and a very handy item to have. Len uses whatever material he finds to turn these cases, and finishes them with Shellowax.



It's good to have Peter McDowell back to see what he has come up with next. This amazing vessel is made from Huon pine, which Pete brought back from a trip to Tassie, turned it and carved the petals by hand, flattened the vessel to make two sides, then set about to hand carve a Bilby on one side, and Kangaroos with the Southern Cross on the other.



Barry Fenning made this interesting pen holder and used a polished penny as a feature. The holder is made from a red gum limb, cut, sanded and finished with 2 coats of satin polyurethane. The 3 pens are osage orange and banksia.



Garrard Muldoon fashioned this very interesting toothpick holder in the form of a cannon. He used a variety of timbers, including gidgee for the wheels, black wattle for the canon, oak for the base or carriage and red gum for the straps. He saw something similar in a woodwork magazine and developed his own version - great job Garrard.

Peter McDowell's other masterpiece is a vessel made from white cedar - turned all in one piece, including the base, then drilled through the side of the top, and hand carved to complete. Pete highlighted the base and shape of the vessel by a thin line of black paint around the edge, with great impact



Mark Barraclough has also been busy making this table and chair set for his granddaughter out of the pacific maple donated by Timberline windows in the Bay and laminated pine which formed the tabletop. He finished it with two coats of Osmo.

Sue Page has turned a variety of acrylic pens in lots of bright colours. I believe turning acrylic is a labour of love and required lots of re-sharpening tools along the way, so well done Sue!



Member's Profile

PETER BROTHERTON

My education was mainly technically oriented and included woodwork (still have the mallet I made), metalwork and technical drawing. My work experience includes dealing in automotive repair components, Vesta Battery Company, Capital Auto Electrical and the Public Service. In 1961 I married Deb at Parramatta. We have 3 children and 6 grandchildren. After our marriage I was asked to go to Canberra where I became manager of the Capital Auto Electrical outlet there covering the South East corner of NSW. After some rationalisation within the company I was offered a job back in Sydney but we had just bought a house and decided to stay in Canberra. I joined the Commonwealth Public Service (Department of Primary Industries) and found my niche in The Australian Quarantine and Inspection Service (AQIS). I was mainly involved with the meat inspection side of AQIS and spent most of my time writing legislation and manuals associated with this activity. I was also Chairman of a Standards Australia committee dealing with fibreboard packaging for export and Secretary to the Australian Defence Force Food Specifications Committee responsible for drawing up food standards for the armed services. In 1993 I was awarded the AQIS Australia Day Award in recognition of "outstanding service".

I was strongly influenced by my step father (ex navy, a boilermaker & jack of all trades). I have always had an interest in repairing, designing and building things. This led me to decide that I would pursue woodwork as a hobby. I joined the ACT Woodcraft Guild and spent quite a few years with them, increasing my knowledge and skills.

After retiring from the Public Service, Deb and I decided to move to the South Coast. Shortly after arriving here I joined the Eurobodalla Woodies. While I was mainly interested in making smaller items such as pens, toys, small sewing accessories, etc. my meeting with the legendary Art Keeler and attending Art's box making courses increased my woodworking skills and led me into new adventures.

My association with the Eurobodalla Woodies has been a rewarding experience and I thoroughly enjoy my time with them and the willingness of all to help others and impart knowledge. I've tried to give something back by serving on the Executive for a number of years. Thanks to everyone.



Next meeting will be held on **Saturday 6th October 2018 at Mogo Workshop.**

BBQ will be held at 12 noon followed by the meeting at 1 pm.

NEXT MEETING

"OFFCUTS"

DEFIBRILLATOR

For quiet some time now Sue Page has been encouraging the Executive of EWG to invest in a defibrillator for emergency use at our workshop. The good news came through that Club Catalina had decided to give funds to EWG as a grant for the purchase of this vital instrument, to assist in the event of a cardiac arrest. In Sue's role as a volunteer First Aid Officer with St Johns Ambulance, she has seen many instances of defibrillators saving lives if they can be accessed in good time. Sue demonstrated how the unit functions and how to operate it at a recent workshop day, and encouraged members to familiarise themselves with the instructions manual. Let's face it, there will be no time to sit down and leaf through the instructions if an emergency is upon us at the workshop. Immediate and urgent action will be required, so please take the time to do this at your earliest opportunity.



You may recall in the August newsletter Nick Stone showed us the results of fiddling around with Banksia to use as pen blanks. The pen makers in our group were very intrigued, and keen to know Nick's secrets. He has kindly share them with us, providing the following link : <http://ewguild.blogspot.com/2018/08/banksia-wars.html>. If you are not successful with the link, I am sure Nick would be pleased to help you.



Safety Corner

It was noted recently that tape was used on the power cord of the Festool orbital sander to nullify a contact problem in the power cord plug. On checking and testing the cord it was found that one contact was burned which pointed to the fact that the plug must have come loose during operation.

Festool power cords require to be plugged in and **turned clockwise to lock into place**, and the reverse to unplug.

It was further noted that the cable behind the plug had a contact problem or loose joint or break which rendered the cable unusable. All Festools use the same power cord consequently another cord was used for the orbital sander.

In conclusion; PLEASE never use tape on any electrical equipment, if you become aware of any damage or intermittent operation of the equipment inform somebody immediately.

Electricity is dangerous and that applies to your home and the workshop.

It was also noted the winding mechanism of the under bench routers was stuck in the upper position. By freeing the mechanism the turning pin broke off. The router is still operational but not usable with the table top winder mechanism. A new shaft has to be sourced from a supplier.

Please treat any machine or power tool with care, more like a baby. If you hear a funny noise, stop. If you feel any resistance, stop. If there is a mess, clean it.

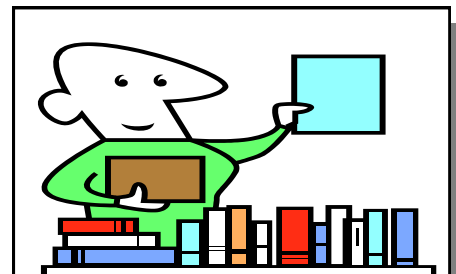
Helmut

Remember, contributions of newsletter articles are always welcome. Please feel free to send to either myself or Malcolm by email.

Edited by Christine Birks and Malcolm McDonald

Club Website :
www.eurobodallawoodies.org.au

Email : ewg.mogo@yahoo.com



The club library is always open for business.

It holds over 70 books on most woodwork subjects, over 200 current and back issues of woodworking magazines, videos, and most current catalogues of tools and woodworking suppliers.

Members Corner

Sculpture on Clyde celebrated local, national and overseas sculpture and artworks recently held at the outdoor exhibit at Willinga Park Bawley Point just north of Batemans Bay, and an indoor exhibition at Clyde St, Batemans Bay.



Woodies member David Keating entered the Sculpture on Clyde exhibit with a Seal he carved from a local Spotted Gum tree branch. The contours and textures of this spotted gum branch inspired David to carve the form of this sun baking seal.

As David explains, “a very large, curvy spotted gum branch overhanging my barbecue area had to come down, so I had the arborist save me three large pieces for sculptures. I hadn’t planned to carve a seal from this piece, or animal of any kind, but the more I looked at its natural form the more it became clear that a seal it would be.

With much of the form given to me, the rest came by carving the rear section, carving and attaching two fore-fins from off cuts, carving head and facial features, accentuated by wood-burning, and adding plastic eyes. The finish was burnishing oil on the carved timber and exterior varnish over the whole. The main tools used were a chainsaw for rough blocking, an Arbortech Turbo plane and mini-grinder for shaping, and the club’s Festool random orbital sander for finishing. For the two remaining spotted gum pieces, two different sea creatures beckon ..
David Keating



The other exhibit of note was from our very own Nick Hopkins, whose exhibit was hanging in the indoor exhibition in Batemans Bay.

Nick said the idea for this mobile came from playing with the flexibility of hoop pine ply cut into a spiral like a slinky. From the centre 6 arms spiral up and 6 down.

The Red Cedar sphere at the bottom pulls the spirals into shape whilst the Spotted Gum sphere at the top keeps the whole piece symmetrical.

The void in the middle looked a lot better with a third Bunya Pine sphere suspended there.

At first it was all held together with leftover lengths of stainless steel cable from a verandah renovation. However I wanted to make the cables more invisible so I replaced them all with bicycle gear cables painted black. The mirror ball motor helps the piece achieve the elegance that gentle motion can impart.

Here are just a few other sculptures from the exhibit I thought you may enjoy

